



Professionally design and manufacture ultrasonic scaler



NANNING BAOLAI MEDICAL INSTRUMENT CO., LTD  
Address: 7<sup>th</sup> Floor , General Building, Hetai Sci. &Tech. Park,  
No.9 Gaoxin 4<sup>th</sup> RD., Nanning, Guangxi, 530007, China  
Tel:0086-771-3815998 Web:www.boool.com  
Fax :0086-771-3217883 Email:info@boool.com

PA-BL-X-E-5 A8

www.boool.com  
Let's make things better!



Nanning Baolai Medical Instrument Co., Ltd is a modernized high tech enterprise specialized in researching, manufacturing and marketing piezo ultrasonic scaler. Having the most advanced technology, we specialize in developing and innovating piezo ultrasonic scaler and aim to make the best ultrasonic scaler in China.

Besides 26 national patents, we also obtain ISO13485, CE, American FDA and Bureau Veritas Certification. We are the first one launching 'No cracking' aluminum alloy handpiece and 'No consumables' auto-water supply scaler in the world, filling the gap of the industry and pushing forward the trend of MADE IN CHINA to CHINA IDEA!

Sticking to the enterprise spirit of LET'S MAKE THINGS BETTER, Baolai devotes itself in contributing more to CHINA IDEA!

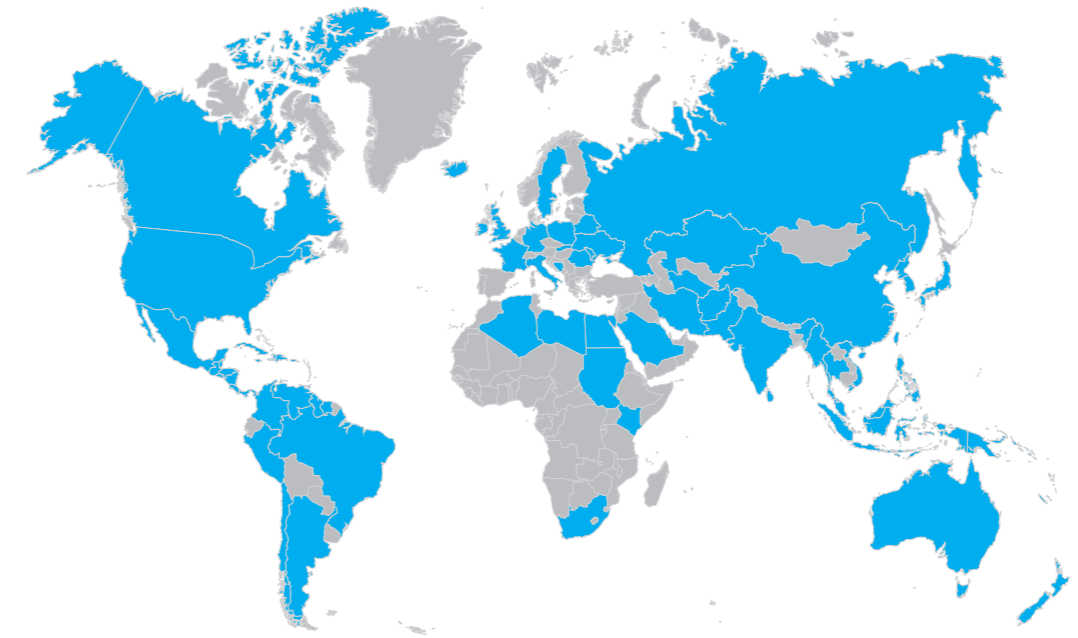


Registration No.3008615394  
510K No.K140233



## Customers

BAOLAI's products have been sold to more than 100 countries



## Corporate Culture

**Best:** on behalf of insisting on strategy of success through quality, pursuit of excellence and never stop.

**Believable:** on behalf of insisting on the principle of sincerity and good faith, and developing enterprise on basis of both.

**Brilliant:** on behalf of social commitment, people oriented, human and enterprise win-win.

**Beautiful:** on behalf of adhering to keep improving, superior to create, beauty in life.

# Handpiece

E Series

## Model: L3

Aluminum alloy material.  
No cracking! More comfortable!

LED handpiece

Detachable handpiece can be autoclaved under the high temperature and pressure (135°C, 0.22MPa)

Compact size, easier to hold and operate.

Compatible with BAOLAI and EMS scalers



No deformation  
No yellowing  
No cracking



## Model: H1

Sealed handpiece  
Automatic frequency tracking,  
works steadily.



## Model: H2

Detachable handpiece can be autoclaved under the high temperature and pressure. (135°C, 0.22MPa)  
Compatible with BAOLAI and EMS scalers



## Model: L1

Sealed handpiece  
LED handpiece  
Automatic frequency tracking,  
works steadily.



## Model: H3

15 national patents  
Aluminum alloy material.  
Detachable handpiece can be autoclaved under the high temperature and pressure. (135°C, 0.22MPa)  
Compatible with BAOLAI and EMS scalers  
No deformation No yellowing No cracking



# Handpiece

S Series

## D2 Handpiece

Aluminum alloy material.

Detachable handpiece can be autoclaved under the high temperature and pressure.

(135°C, 0.22MPa)

Compatible with BAOLAI and SATELEC scalers  
No deformation No yellowing No cracking



## Aluminum alloy handpiece

Made of aluminum alloy, it can undergo repeating autoclave and remain uncracked.

Aluminum alloy better disperses heat, protects the transducer and therefore extends use life.

Much more stable working frequency ensures patients' comfort. Anti-skidding design, more comfortable handling, higher grade.



## Model: HS1

Sealed handpiece  
Automatic frequency tracking,  
works steadily.

Satelec tips can be used on HS1



## Model: D1

Sealed handpiece  
LED handpiece  
Automatic frequency tracking,  
works steadily.

Satelec tips can be used on D1



## Model: D3

15 national patents  
Aluminum alloy material. LED handpiece

Detachable handpiece can be autoclaved under the high temperature and pressure.

(135°C, 0.22MPa)

Satelec tips can be used  
No deformation No yellowing No cracking



# E Series ultrasonic scalers

Scaler tips and H2/H3/L3 handpieces are compatible with EMS scalers

## Conch series Ultrasonic scaler

SCALING/PERIO  
Design patent No.:ZL 2009 3 0175118.8

### Model:P5L

Aluminum alloy handpiece  
No cracking! More comfortable!  
LED handpiece  
Detachable handpiece can be  
autoclaved under the high  
temperature and pressure.  
(135°C,0.22MPa)

Rate: 30VDC  
Frequency:28kHz±3kHz



### Model:B5

Sealed handpiece  
Automatic frequency tracking,  
works steadily.

Rate: 30VDC  
Frequency:28kHz±3kHz



### Model:P4

Detachable handpiece can be  
autoclaved under the high  
temperature and pressure.  
(135°C,0.22MPa)

Rate: 30VDC  
Frequency:28kHz±3kHz



### Model:B5L

Sealed handpiece  
LED handpiece  
Automatic frequency tracking,  
works steadily.

Rate: 30VDC  
Frequency:28kHz±3kHz



### Model:P5

Aluminum alloy handpiece  
No cracking! More comfortable!  
Detachable handpiece can be  
autoclaved under the high  
temperature and pressure.  
(135°C,0.22MPa)

Rate: 30VDC  
Frequency:28kHz±3kHz



# Coral series Ultrasonic scaler

SCALING/PERIO/ENDO

## Model:P7L

Scaling/Perio/ Endo  
Aluminum alloy handpiece  
No cracking! More comfortable!  
LED handpiece  
Detachable handpiece can be autoclaved under the high temperature and pressure.(135°C,0.22MPa)

Rate: 30VDC  
Frequency:28kHz±3kHz



135°C  
CE 0197



## Model:B6

Scaling/Perio/Endo  
Sealed handpiece  
Automatic frequency tracking,  
works steadily.

Rate: 30VDC  
Frequency:28kHz±3kHz



## Model:P6

Scaling/Perio/Endo  
Detachable handpiece can be autoclaved under the high temperature and pressure.(135°C,0.22MPa)

Rate: 30VDC  
Frequency:28kHz±3kHz



## Model:B6L

Scaling/Perio/Endo  
Sealed handpiece  
LED handpiece  
Automatic frequency tracking,  
works steadily.

Rate: 30VDC  
Frequency:28kHz±3kHz



## Model:P7

Scaling/Perio/ Endo  
Aluminum alloy handpiece  
No cracking! More comfortable!  
Detachable handpiece can be autoclaved under the high temperature and pressure.(135°C,0.22MPa)

Rate: 30VDC  
Frequency:28kHz±3kHz



# C series Built-in scaler

Special design for dental unit

Endo function is optional

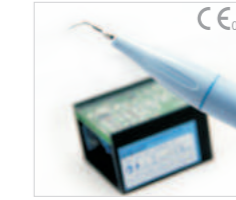
## Model: C7L

Aluminum alloy handpiece  
No cracking! More comfortable!  
The best match for dental unit  
LED handpiece  
Detachable handpiece can be autoclaved under the high temperature and pressure.(135°C,0.22MPa)

Rate: 24VAC 50/60Hz  
Frequency:28kHz±3kHz



135°C  
CE 0197



## Model:C5

Sealed handpiece  
Automatic frequency tracking,  
works steadily.

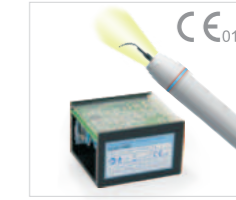
Rate: 24VAC 50/60Hz  
Frequency:28kHz±3kHz



## Model:C6

Detachable handpiece can be autoclaved under the high temperature and pressure. (135°C,0.22MPa)

Rate: 24VAC 50/60Hz  
Frequency:28kHz±3kHz



## Model:C5L

Sealed handpiece  
LED handpiece  
Automatic frequency tracking,  
works steadily.

Rate: 24VAC 50/60Hz  
Frequency:28kHz±3kHz



## Model:C7

Aluminum alloy handpiece  
No cracking! More comfortable!  
The best match for dental unit  
Detachable handpiece can be autoclaved under the high temperature and pressure.(135°C,0.22MPa)

Rate: 24VAC 50/60Hz  
Frequency:28kHz±3kHz



# Pearl series P9/P9L

## Auto-water Supply Scaler

### SCALING/ ENDO

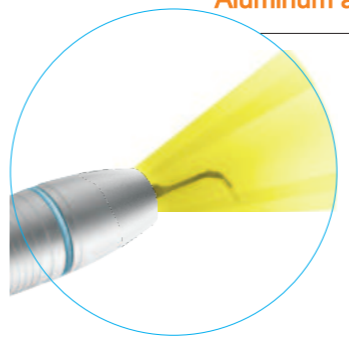
Auto-water supply device;  
 Built-in power supply;  
 LED handpiece  
 Detachable handpiece can be autoclaved under  
 the high temperature and pressure.(135°C,0.22MPa)  
 Aluminum alloy handpiece;  
 Obtaining national patents;  
 Identifying scaler tip automatically;  
 PC control, automatic frequency tracking.



Compact,space saving:243x145x150(mm)

Water supply system without consumables,cost saving.

Aluminum alloy LED handpiece is optional



H3 Aluminum alloy detachable handpiece

Noiseless working

# No Consumables!



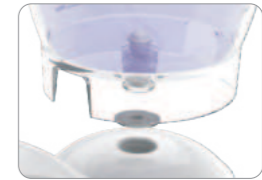
Aluminum alloy LED handpiece is optional



Functional shift buffer zone



Prepositive water regulator



Filter design for protection



Convenient for liquid adding



Built-in power supply



Convenient for liquid monitoring

# S Series ultrasonic scalers

Scaler tips and D2/D3 handpieces are compatible with Satelec scalers

## Rock series Ultrasonic scaler

### Touch screen

Satelec tips can be used on the series

#### Model: RP5

Auto-water supply system (optional)

Scaling/Perio/ Endo

Aluminum alloy handpiece

No cracking! More comfortable!

LED handpiece

Detachable handpiece can be autoclaved under the high temperature and pressure.(135°C,0.22MPa)

Rate: 30VDC  
Frequency:28kHz±3kHz



#### Model:RD1

Scaling /Perio

Sealed handpiece

LED handpiece

Automatic frequency tracking, works steadily.

Rate: 30VDC  
Frequency:28kHz±3kHz



#### Model: RD3

Scaling /Perio

Aluminum alloy handpiece

No cracking! More comfortable!

LED handpiece

Detachable handpiece can be autoclaved under the high temperature and pressure.(135°C,0.22MPa)

Rate: 30VDC  
Frequency:28kHz±3kHz



#### Model: RD2

Scaling /Perio

Aluminum alloy handpiece

No cracking! More comfortable!

Detachable handpiece can be autoclaved under the high temperature and pressure.(135°C,0.22MPa)

Rate: 30VDC  
Frequency:28kHz±3kHz



#### Model: RP4

Scaling /Perio /Endo

Auto-water supply system(optional)

Aluminum alloy handpiece

No cracking! More comfortable!

Detachable handpiece can be autoclaved under the high temperature and pressure.(135°C,0.22MPa)

Rate: 30VDC  
Frequency:28kHz±3kHz



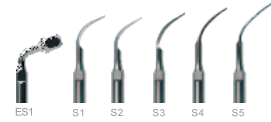
# Model: P9-3

## Auto-water Supply Scaler

### SCALING/ ENDO

Auto-water supply device;  
Built-in power supply;

Detachable handpiece can be autoclaved under the high temperature and pressure.(135°C,0.22MPa)  
Aluminum alloy handpiece;  
Obtaining national patents;  
Identifying scaler tip automatically;  
PC control, automatic frequency tracking.



### Model: B5S

Scaling /Perio  
Sealed handpiece  
Automatic frequency tracking,  
works steadily.

Rate: 30VDC  
Frequency:28kHz±3kHz



### Model:P9-2

Scaling / Endo  
Auto-water supply device;  
Built-in power supply;  
Detachable handpiece can be autoclaved under the high temperature and pressure.(135°C,0.22MPa)  
Aluminum alloy handpiece;  
Obtaining national patents;  
Identifying scaler tip automatically;  
PC control, automatic frequency tracking.  
Rate: 30VDC  
Frequency:28kHz±3kHz



### Model : BD2

Scaling/Perio  
Aluminum alloy handpiece  
No cracking! More comfortable!  
Detachable handpiece can be autoclaved under the high temperature and pressure.(135°C,0.22MPa)

Rate:30VDC  
Frequency: 28kHz±3kHz



### Model:B6S

Scaling/Perio/Endo  
Sealed handpiece  
Automatic frequency tracking,  
works steadily.

Rate: 30VDC  
Frequency:28kHz±3kHz



# C series

## Built-in scaler

### Special design for dental unit

Endo function is optional

### Model: CD3

Aluminum alloy handpiece  
No cracking! More comfortable!  
The best match for dental unit

LED handpiece

Detachable handpiece can be autoclaved under the high temperature and pressure.(135°C,0.22MPa)

Rate: 24VAC 50/60Hz  
Frequency:28kHz±3kHz



### Model: C5S

Sealed handpiece  
Automatic frequency tracking,  
works steadily.

Rate: 24VAC 50/60Hz  
Frequency:28kHz±3kHz

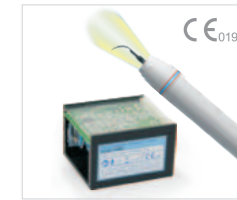


### Model: CD2

Aluminum alloy handpiece  
No cracking! More comfortable!  
The best match for dental unit

Detachable handpiece can be autoclaved under the high temperature and pressure.(135°C,0.22MPa)

Rate: 24VAC 50/60Hz  
Frequency:28kHz±3kHz



### Model: CD1

Sealed handpiece  
LED handpiece  
Automatic frequency tracking,  
works steadily.

Rate: 24VAC 50/60Hz  
Frequency:28kHz±3kHz





# Wrench

## Torque Wrench

Model:TW3

Unique patent  
Aluminum alloy material.  
It could hold the tips for at least 3000 times!



Torque Wrench

Model:TW2

Plastic material  
It can hold the tips  
for a least 1500 times!



Wrench

Model:TW1



Endo Wrench

Model:EW1

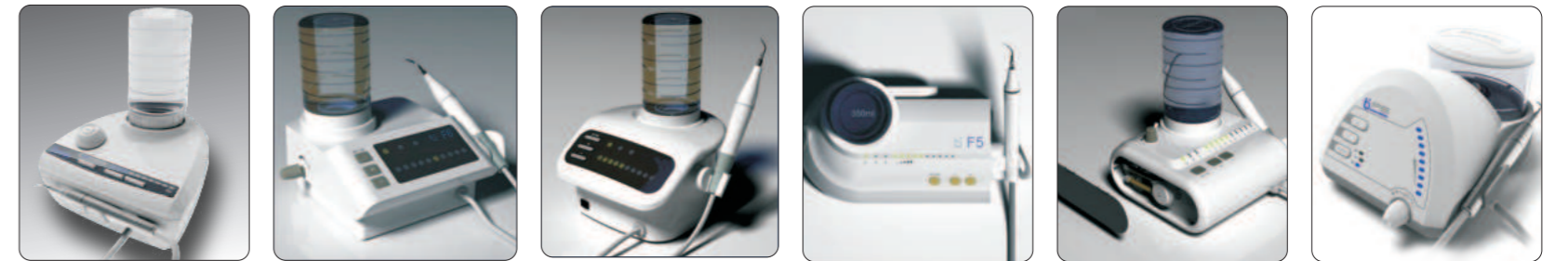
# X1

## Auto-Water supply system

Design patent.  
Rate:5VDC  
1000ml capacity.  
Water pressure:18KPa-24KPa  
It can be used for any ultrasonic scaler.



## OEM & ODM Service



Baolai provides you excellent OEM&ODM services.

# Scaler tip (T series)



**T1**  
Length:28.9MM  
N.W:0.9g

Removal of supragingival and interdental calculus.



**T2**  
Length:28.6MM  
N.W:0.9g

Removal of heavy calculus and stains in the supragingival area.



**T3**  
Length:28.5MM  
N.W:0.8g

Removal of supra and subgingival calculus.It provides easy access to interdental spaces and narrow pocket.



**T4**  
Length:29.6MM  
N.W:0.8g

Removal of supragingival and interdental calculus.



**T5**  
Length:31.8MM  
N.W:1.0g

Removal of calculus between molar teeth.



**T6**  
Length:30.2MM  
N.W:0.8g

Removal of supragingival and interdental calculus. This tip can be used in all quadrants and is very useful for the removal of hard calculus.Especially between molar teeth.



**T7**  
Length:30.5MM  
N.W:0.9g

Removal of supragingival calculus.This tip can be used in all quadrants and is very useful for the removal of hard calculus.Especially between molar teeth.



**T8**  
Length:31.8MM  
N.W:0.9g

Removal of supra and subgingival calculus.It provides easy access to interdental spaces and narrow pocket.



**T9**  
Length:32.5MM  
N.W:1.0g

Removal of supra and subgingival calculus.It provides easy access to interdental spaces and narrow pocket.



**E1**  
Length:21.2MM  
N.W:1.0g

⚠ E1 is compatible with BAOLAI, same as T series tips.

Non-cutting E1 instrument for effective cleaning and irrigation of the root canal system.



Please use Baolai's scaler tips for Baolai's scalers.



COMPATIBLE WITH:  
BAOLAI, EMS, MECTRON  
Scaling: T1, T2, T4, T5, T6, T7  
Periodontics: T3, T8, T9  
Endo: E1



COMPATIBLE WITH: SATELEC, NSK  
BAOLAI  
Scaling: S1, S2, S4, S5, S6, S7  
Periodontics: S3, S8, S9  
Endo: ES1



## Endo file

Stainless steel material,  
More suitable for cleaning and irrigation  
of the root canal system.

